



# Experienced Solutions

Every day, the years of experience and product knowledge of our people provide solutions to our customers' needs.



*Proud to be independently owned since 1946.*

# Medallion: Type III

The highest standard for emergency vehicles today.

## Medallion 170



### Ford E450 chassis

- 158" WB/100" CA
- 7.3 L V8 gas engine
- Ambulance prep package
- Ford TorqShift 6-speed transmission
- GVW 14,500 – payload 3,750 lbs.

### Body

- 170" body length
- 68", 72", 75" interior headroom options
- Lowered left & right side body skirts
- 24" curb side backboard compartment
- Maximized exterior storage compartments
- Lifetime structural and electrical warranties



## Medallion 170

### Chev G4500 chassis

- 159" WB/100" CA
- Vortec 6.6 L V8 gas engine
- Ambulance prep package
- Chev 6-speed automatic transmission
- GVW 14,200 – payload 3,000 lbs.

### Body

- 170" body length



Custom tool board mount in E compartment for stair chair



## Medallion 80

### Ford E350 chassis

- 138" WB/80" CA
- 7.3 L V8 gas engine
- GVW 11,500

### Chev G3500 chassis

- Vortec 6.6 L V8 gas engine
- GVW 12,300

### Body

- 147" body length
- Lowered left & right side body skirts



Spacious working interior



Providing Experienced Solutions Since 1946

# Classic: Type I

The original PL Custom modular ambulance.



## Classic 170

### Ford F450/550 4x2/4x4 chassis

- 189"WB/108" CA
- Ford 6.7 L V8 turbo diesel or 7.3 L V8 gas engine
- Ford Torque Shift 10 speed transmission
- Ambulance prep package

### Ram 4500/5500 4x2/4x4 chassis

- 192"WB/108" CA
- Cummins 6.7 L diesel engine
- GVW 16,500 to 19,500
- Payloads from 3,000 to 6,000 lbs. depending on GVW
- Liquid Spring Suspension

### Body

- 170" body length
- 68", 72", 75" interior headroom options
- Lowered left & right side body skirts
- Maximized exterior storage compartments
- 24" curb side backboard compartment
- Lifetime structural and electrical warranties



## Classic 147

### Ford F350 4x2/4x4 chassis

- 165"WB/84" CA
- Ford 6.7 L V8 turbo diesel engine
- GVW 14,000

### Body

- 147" body length
- Lowered left & right side body skirts
- Maximized exterior storage compartments



Centrally ducted climate control with unmatched performance



## Classic 156

### Dodge 4500/5500 4x2/4x4

- 168"WB/84" CA
- Cummins 6.7 L diesel engine

### Ford F450/550 4x2/4x4

- 165"WB/84" CA
- Ford 6.7 L V8 turbo diesel or 7.3 L V8 gas engine

### Body

- 156" body length
- 68", 72", 75" interior headroom options



ALS Drawers in rear Medic in Mind Counter

[www.plcustom.com](http://www.plcustom.com)



# Titan: Medium Duty

Supports specialized needs  
for EMS and fire service.

## Freightliner M2



### Chassis

- Cummins B 6.7 260 - 325 EV HP
- Allison 3000 EVS transmission
- 168"WB/102" CA, 174"WB/108" CA
- GVW 20,000 - 24,000
- Hydraulic or air brakes
- OEM air ride or Liquid Spring suspension
- 40 gallon fuel tank under cab or between frame rails

### Body

- 170-176" body length
- 72"- 75" interior headroom options
- Lowered left & right side body skirts
- Maximized 22" deep exterior storage compartments
- 24" curb side backboard compartment
- Lifetime structural and electrical warranties



## International MV607

### Chassis

- Cummins B 6.7 260 HP diesel engine
- Allison 2200/3000 EVS transmission
- 168"WB/102" CA  
174"WB/108" CA
- GVW 20,000
- Hydraulic or air brakes
- OEM air ride or Liquid Spring suspension
- 40 Gallon fuel tank under cab step



Custom designed diamond plate  
cab step with fuel and DEF covers



## Kenworth T270

### Chassis

- Kenworth 4x2
- 6.7 L 280 EV diesel engine
- Allison 3000 EVS transmission
- 170"WB/102"CA
- GVW 21,500
- 45 Gallon fuel tank under cab step
- OEM air ride



PL Custom rear step design. The  
step fully recesses under body in the  
event of impact



[www.plcustom.com](http://www.plcustom.com)

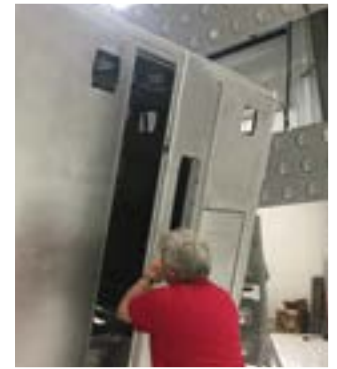
# Safety:

**Certified to SAE Ambulance  
testing requirements**



*Modular body testing  
to SAE J3057 – platen  
impact on upper corner  
of body*

*Successful body impact  
results – doors easily  
opened with no resistance*



*Occupant restraint testing  
to SAE J3026 for Head  
Injury Criteria (HIC)*

*Successful occupant  
restraint testing of  
6 point belt system*



*Cabinet testing  
to SAE J3058 for content  
retention at 26 G force*

*Successful dynamic  
testing provides cabinet  
content weight ratings*



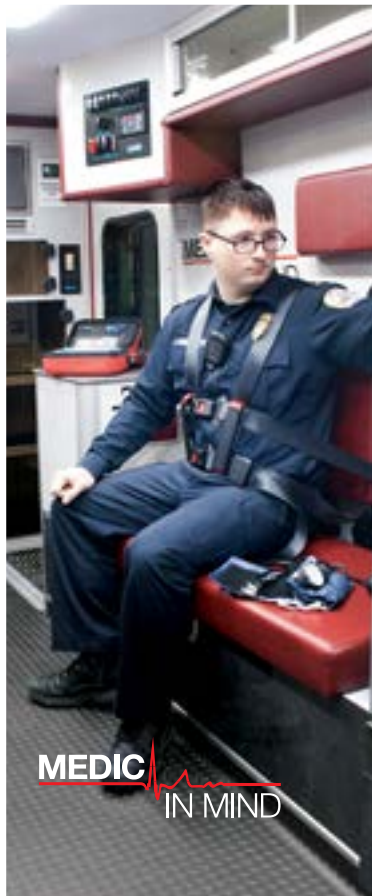
**We build safety directly into the design and manufacture of our vehicles, meeting  
and exceeding federal standards for structural integrity**

*Experience The PL Advantage*



# Interior layouts:

Designed with purpose



*Medic in Mind layout with 6 point restraint. Cabinets fore and aft of seat keep equipment within arm's reach*



*Medic in Mind single seating utilizing 6 point harness*



*Multiple seating curb side bench with 6 point harness and contoured headrest*



*Full length squad bench seat with 6 point Harness*



*Side facing captain chair on sliding track for additional access to patient*



*Optional Medic in Mind with Valor Backrest 4 point restraint with 4 retractors and single release buckle*



*With PL Custom, the choice is yours*

# Electrical Systems:

## Conventional and VMUX Multiplex options



VMUX Vista Screen in Type I Console



Multiplex electrical system with CAN BUS switching



Conventional electrical system with elliptical console design



Conventional electrical and programmable thermostat in Life Support system



Auxiliary switch panel and thermostat curb side



Curb side full switch panel for Medic in Mind



Our electrical systems are backed with a lifetime warranty. VMUX Nodes-10 years coverage



# *The History of PL Custom Body and Equipment Co., Inc.*

The company originated in Pompton Lakes, New Jersey in 1946, and was purchased by Martin V "Bud" Smock in 1970. At that time, the company known as PL Custom Body, continued its tradition of top quality ambulance vehicles.

Bud's forward thinking and passion led to many ambulance and rescue innovations over the years. His vision for the company was to offer high quality customized products, while establishing personalized relationships with each individual customer. With Bud's passing in 2006, Jean Smock assumed the roll of CEO, maintaining the family-owned business.

In 2015, Deborah Smock Thomson, Bud's daughter, took over the reins as President of the company. Deborah has been with the company since 1978. She continues to lead the company with Bud's vision of manufacturing high quality vehicles based on relationships with trust and commitment to our customers.

Today, the company occupies 110,000 square feet and has over 175 full-time employees, many of whom have been with the company for 10, 20, 30, and 45 years. Longevity and dedication to customer satisfaction are key components with the whole PL Custom staff. More than 175 ambulances, rescues, and specialty vehicles are produced and delivered each year.

Our corporate commitment is to provide a high quality emergency vehicle to serve

the needs of the department and the community, and when you purchase a PL Custom emergency vehicle, you get much more. Our company builds relationships and trust with our customers as well as vehicles.

This is the added value standard at PL Custom.



PL Custom has remained a stable, reliable company over the years and has maintained our vision as an independently-owned, customer-focused designer and manufacturer of high quality custom emergency vehicles.

Reliability, durability, and safety are our core values supporting the sales design, engineering and manufacturing of all our products.



*Find out more about our unmatched commitment to customer satisfaction.*



PL Custom • Manasquan • New Jersey • [plcustom.com](http://plcustom.com) • 800-752-8786

